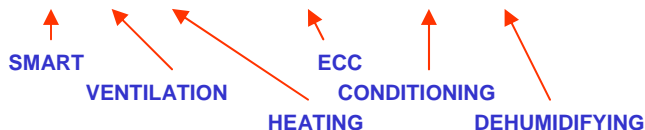




DEFS71AUP



DISPLAY WITH ECC



The new display with ECC (Electronic Climate Control) makes the air-conditioner extremely easy to use; it features new functions including turbo power, smart, clock, light

Additional Features

- "Smart" fully automatic operation
- Intelligent Defrosting
- Auto Restart
- Auto Fan Mode
- 3 Fan Speeds
- Timed On and Off Function
- Sleep Function
- Swing Function
- ECC LED Display on/off
- Hot Start
- Visual Diagnostic Function

I - COMFORT REMOTE



Thanks to the temperature sensors fitted in both the remote control and the wall unit, the new I-COMFORT function, allows the user to choose whether they sense the temperature at the unit or at the remote control location. Switching between the two with the I Comfort button.

BIOSILVER TECHSYSTEM



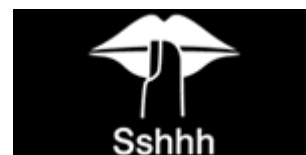
The new BIOSILVER TECHSYSTEM combines a biological filter with an electrostatic filter (Eliminates odours) and a silver ion filter that helps fight bacteria. The ionizer helps attract airborne particles directly into the filter and releases healthy negative ions into the air. All this ensures you'll have greater air quality in your home.

TURBO POWER



Turbo Power Function allows you to have the cooling and heating conditions you desire in the shortest time.

SUPER SILENT



Technological and design improvements make DeLonghi Air Conditioners one of the quietest of its category .

Dimensions Indoor unit (lxhxd)	mm	1020X310X250
Dimensions Outdoor unit (lxhxd)		950x840x420
Rated voltage/Frequency	V-Hz	220-240~50
Cooling capacity	BTU/h-W	21,142/6.200
Heating capacity	BTU/h-W	23,870/7.000
Energy Efficiency Rating		3.11
Weight Outdoor/Indoor	Kg	72/16
Input power	W	2000
Max Air flow internal	m³/h	620
Moisture removal	l/24h	64.8
Min Noise level internal	dB(A)	39
Max noise level external	dB(A)	56
Cooling Star Rating		4
Maximum Pipe Length		15m
Height Differential		5m
Liquid Line Size		3/8
Suction Line Size		5/8'



Who can resist a good looking Italian?