



**NESPRESSO**®

**ESSENZA**



**D90**

**Instruction Manual**



Please read this Instruction Manual and the safety instructions before operating the appliance!

ON/OFF switch



Lever

Coffee outlet

Coffee button

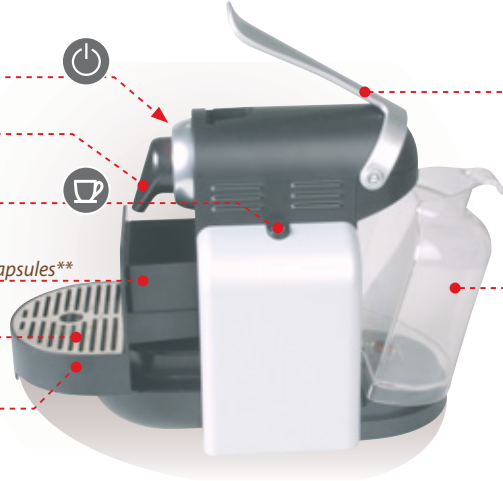


Capsule container for 12 - 14 capsules\*\*

Water tank\*\*

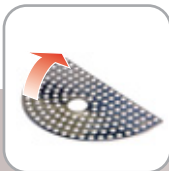
Drip grid\*\*

Drip tray\*\*



\*\* Spare parts

# 1 First use or after a longer period of non-use



Remove plastic film



Fill water tank



Place a container



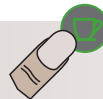
Plug into mains +  
switch ON



Heating up



Ready



Let water run through

No water



see: **8b**

# 2 Daily: before the 1st coffee



Fill water tank with  
fresh water



Switch ON



Heating up



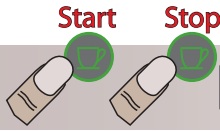
Ready

# 3 Espresso Lungo

## Preparation



Preheat cup: 1 cup of water



Insert capsule



Flow speed depends on coffee variety

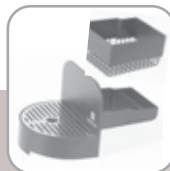


Eject capsule (drops into capsule container)

# 4 Daily: After the last coffee



Switch off



Empty capsule container + drip tray



Rinse and empty water tank

## 5 Clean: When necessary



~~abrasive~~

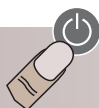
~~solvent container~~

~~dishwasher~~

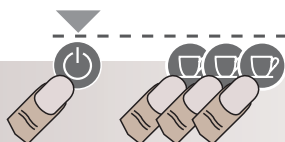


Damped cloth, cleaning agent mild

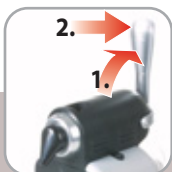
## 6 Empty system: After long period of non-use, for frost protection and after repair



Switch off



press, hold  and press 3 x 



1. Open  
2. push and hold for 3 secs.



Close



Machine switches off automatically and is **blocked for 10 min**



# 7 Descaling

Carefully read safety instructions on decalcifier package.  
Decalcifier is aggressive to surface of casing.  
Vinegar: Danger of damage

Water hardness    Descal after

fH	dH	Descal after
36	20	300
18	10	600
0	0	1200

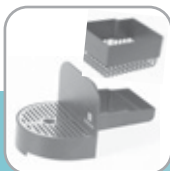


## Preparation

a



Remove capsule



Empty capsule container + drip tray



Rinse machine, see 1



If leakage see:

8d

b



Fill with Nespresso descaler and 0.5 l water



Place a recipient



1. Lift lever, 2. insert filter, 3. close lever

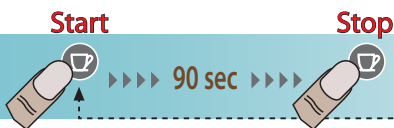


Avoid using vinegar as it can damage your machine.

c



Press both buttons simultaneously for 3 seconds



Let descaling solution run through twice



Refill water tank once more with descaling solution and repeat step

## Rinse

d



Remove filter



Empty, rinse and fill water tank with fresh water



Rinse machine, see 1



Exit: press both buttons simultaneously for 3 secs



# 8 Troubleshooting

a



No indication



Check mains: plug, voltage, fuse. In case of problems call *Nespresso Club*

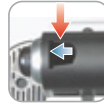
No coffee, no water

- Water tank empty -> fill water tank
- Venting

b



**Start**



Water comes



Close

**Stop**

1. Open + 2. push and hold for 3 secs

- Descale, if necessary -> point 7

c

Coffee not hot enough



Preheat cup, descale if necessary

d

Capsule area leaking (water in capsule container)



Position capsule correctly. If leakage: call *Nespresso Club*

e



Irregular interval blinking



Send machine to repair or call *Nespresso Club*



## Specifications



..... 220 - 240 V, 50 Hz, max. 1260 W



..... max. 19 bar



..... ~ 3 kg



..... 1 l



..... 5°C ... 45°C



..... 16.6 cm | 25.2 cm | 29.1 cm



## Optional Accessory



*Nespresso* descaling kit



# Safety precautions

Keep this instruction manual

This appliance may become a safety hazard if these instructions and safety precautions are ignored.

SOS

- Emergency:  
Immediately remove plug from power socket.



- This product has been designed for domestic use only. Any commercial use, inappropriate use or failure to comply with the instructions, the manufacturer accepts no responsibility and the guarantee will not apply.
- Remove plug from socket if not in use for long periods - holiday etc.



- Check that the voltage quoted on the rating plate is the same as your voltage.
- Connect the appliance only to power sockets with protective earth. The use of incorrect connection voids warranty.



- Place on a flat, stable heatresistant work surface away from water splashes and any heat sources.



- Do not use the machine if it is not operating perfectly or if there is evidence of damage. In such cases inform *Nespresso Club*.



- Always close lever, never lift during operation.
- Do not put fingers into capsule compartment and capsule shaft, danger of injury.
- Do not use appliance without drip tray and drip grid.
- Keep appliance/cord out of reach of children.



- Do not place power cord by hot parts or sharp edges, etc.
- Never touch cable with wet hands.
- Do not unplug by pulling the cord.
- In case of damage, do not use the appliance. In order to avoid danger have repairs and replacement of power cord only by *Nespresso Club*.



- Do not open appliance and do not put anything into openings.
- All operations other than normal use, cleaning and care must be performed by *Nespresso Club*.



- Children may never use the appliance without close adult supervision.



- Before cleaning/care unplug the appliance and let it cool down.
- Never clean wet or immerse plug, cord or appliance in any fluid.



- Descaling:  
7c) Do not lift lever during descaling process.  
7d) Rinse the water tank and clean the machine to avoid any residual descaling agent.



- Packaging is made of recyclable materials.



- Environment protection first!  
Your appliance contains valuable materials which can be recovered or recycled. Leave it at a collection point.